

HYUNDAI SAFETY TECHNOLOGY – QUICK REFERENCE GUIDE

Active Safety – Active safety features that help the driver avoid accidents by maintaining control

Anti-lock Brakes and Traction Control



- 4-channel, four-sensor Anti-Lock Brake System (ABS)
- Helps drivers maintain steering control during emergency braking situations.

Traction Control

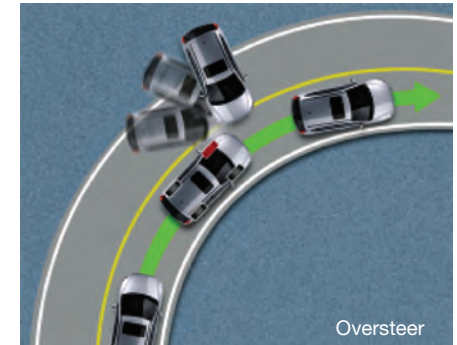
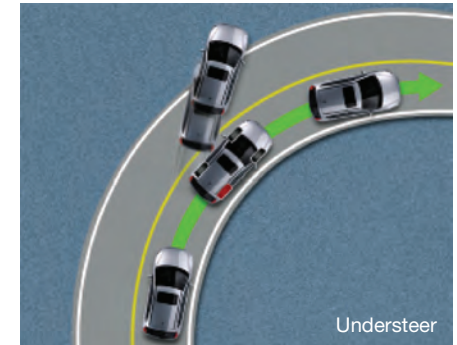
- Traction Control, or TCS, works in harmony with the Anti-Lock Brake System.
- Helps prevent the drive wheels from spinning while accelerating under slippery conditions.



Electronic Stability Control

- Electronic Stability Control, or ESC, compares the driver's intended course, based on steering, throttle, wheel and body sensor inputs, to the vehicle's actual direction.
- If ESC senses a loss of traction in a turn, caused by slippery surfaces, or too high a speed for conditions, the system automatically brakes individual front or rear wheels and/or reduces excess engine power as needed.
- ESC may react before the driver is aware of a loss of traction, helping to keep the vehicle on the road.
- In a study conducted by the Insurance Institute for Highway Safety (IIHS), ESC reduced the risk of all single-vehicle crashes (fatal and non-fatal) by 41 percent.

NOTE: Be aware that even though the system can help the driver maintain control in an emergency avoidance maneuver, it cannot counteract unsafe driving.



Electronic Brake Force Distribution

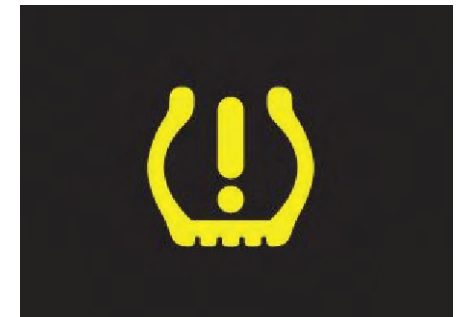


- Electronic Brake Force Distribution, or EBD, manages the braking system under different vehicle load conditions.
- Brake force is proportioned to each wheel *individually*, based on the driving conditions and available traction.

Tire Pressure Monitoring System

- Tire Pressure Monitoring System, or TPMS, monitors the inflation pressure of each tire.
- If the pressure falls more than approximately five pounds below manufacturer's recommended pressure the TPMS system will display this indicator.

NOTE: Be aware that tire pressure may vary in colder temperatures, causing the low tire pressure indicator to illuminate. The Tire Pressure Label is located on the driver's side door pillar.



Passive Safety – Passive safety features help protect the driver and passengers, in the event of an accident

Airbags

Airbags are a supplemental restraint system.



- All Hyundais come equipped with:
 - Two front two-stage airbags
 - Two front seat-mounted side impact airbags
 - Two full-length, roof-mounted side-curtain airbags
- Azera and Genesis include these additional airbags:
 - Two rear seat-mounted side impact airbags

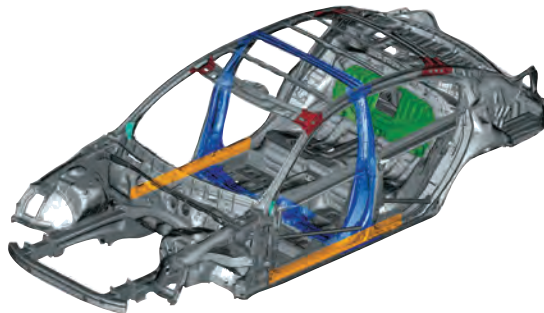
Front Seat Active Head Restraints

Offer extra protection in rear-end collisions.

- All Hyundais (next generation Accent will also include) offer front seat active head restraints—which actively move to close the gap between head restraint and passenger's head to further increase protection in rear-end collisions



Side-Door Guard Beams



All Hyundais provide side-door guard beams to provide reinforcements in front and rear doors.

3-Point Seatbelts



All Hyundais offer three-point seatbelts for all seating positions.

- All seatbelts include Emergency Locking Retractor, or ELR, function. The ELR function allows belt motion for comfort under normal driving conditions but locks the belt during certain decelerations.
- All passenger seatbelts also include an Automatic Locking Retractor, or ALR, function. This function is activated when the seatbelt is pulled all the way out. This engages a ratcheting mechanism which is useful for securing child safety seats without the need for troublesome, additional locking clips.
- Seatbelt Pretensioners and Load-Limiters may activate, in the event of an accident.
 - In an accident, Pretensioners take up slack in the seatbelt, while Load Limiters set the tension of the seatbelt.

Crumple Zones

All Hyundais are equipped with front and rear crumple zones, which are designed to help protect the passenger compartment.

Also included:

- Reinforced, unitized body adds structural rigidity in the roof and sub-frame
- Break-away engine mounts and steering column help protect occupants

